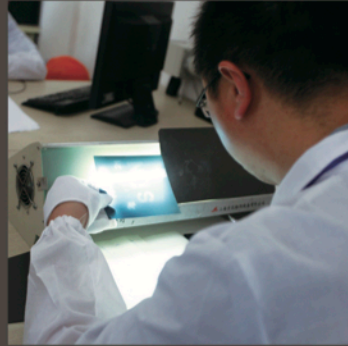
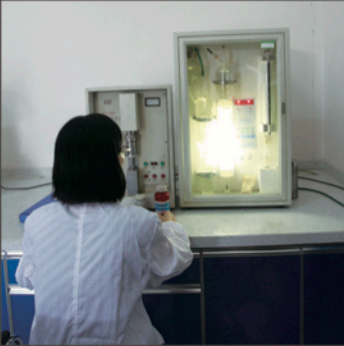




Ball valves-Butterfly valves-Gate valves-Globe valves-Check Valves



# Butterfly Valve



## *Butterfly Valve*

### ***Features***

NPS: 3" ~ 36"

CLASS: 150 LB ~ 600LB

Connection: Lug, Flanged, Wafer & Butt-weld

Double Offset Butterfly Valve & Triple Offset Butterfly valve

Material: WCB/LCB/LCC/CF8M/CF8 etc...(On Request)

### ***Metal seated & Soft seated***

### ***Specifications***

Design

ASME B16.34/API 609

Face to Face

API 609/ AWWA-C504/ ASME B16.10/ ISO 5752

End Flange

ASME B16.5 / B16.47

Test

API 598

Fire -Safe

API 607





## Ball Valve

### ***Floating Ball Valve***

#### ***Full Port & Reduce Port***

150 LB : NPS 1/2" ~ 12"

300 LB : NPS 1/2" ~ 10"

600 LB : NPS 1/2" ~ 4"

800/900/1500LB: NPS 1/2" ~ 6"

#### ***Metal seated & Soft seated***

**Design:** API608 / ASME B 16.34 / BS 5351 Etc.

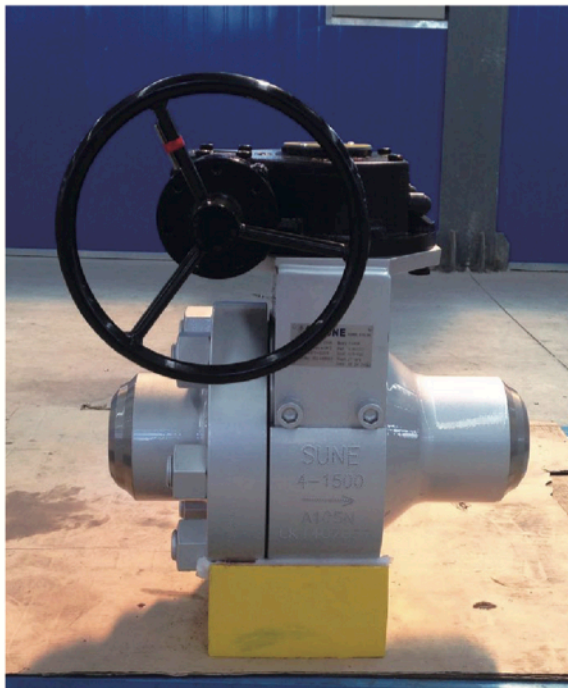
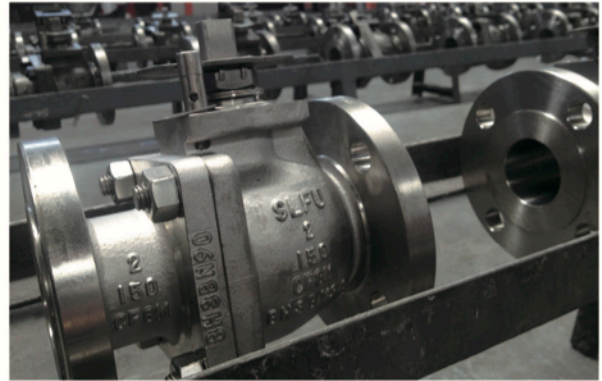
**Features:** Anti-static device, Blow-out proof stem

Fire safe design approved, Lockable design

Low Operating Torque, Easy to service

Extended Bonnet for Cryogenic Service (On Request)

Material: WCB/LCB/LCC/CF8M/CF8 etc...(On Request)



# Ball Valve



## Trunnion Mounted Ball Valve

### Full Port & Reduce Port

Sizes: 2" thru 48"  
Class: 150 thru 2500

### Metal seated & Soft seated

**Design:** API 6D / ASME B 16.34 / ISO 17292 Etc.

**Features:** Anti-static device, Blow-out proof stem  
Fire safe design approved, Lockable design  
Double block and bleed (For all trunnion ball valve )  
Pressure self-relief, Emergency seal recovery,  
Secondary stem & seat seal system, Low Operating Torque,  
Less Maintenance  
Extended Bonnet for Cryogenic Service (On Request)  
Material: A105/LF2/LF6/F316/F51 etc...(On Request)





# Gate, Globe, Check Valve

## Gate Valve

### Features

Size: 0.5" ~ 60";

Class: 150LB ~ 2500LB;

OS&Y, Rising Stem, Bolted/Presuure Seal Bonnet, Flexible Wedge  
By Pass (On Request)

Locking Device (On Request)

Through conduit gate valve (On Request)

Extended Bonnet for Cryogenic Service (On Request)

Material: WCB/LCB/LCC/CF8M/CF8 etc...(On Request)



### Specifications

Design

ASME B16.34/API 600 /API 6D /API 6A

Face to Face

ASME B16.10

End Flange

ASME B16.5/B16.47

BW End

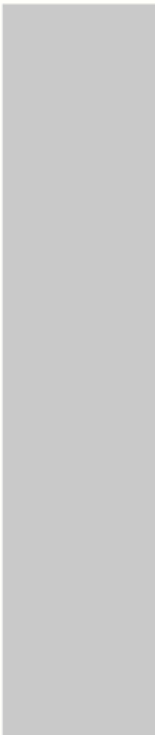
ASME B16.25

Test

API 598

Special

NACE MR-01-75



# Gate, Globe, Check Valve



## Globe Valve

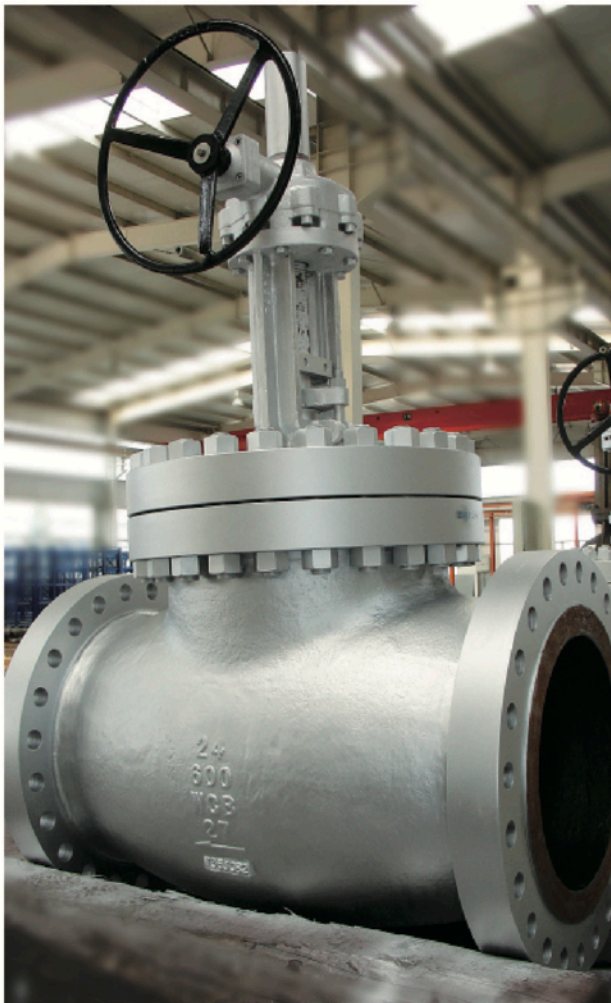
### Features

- Size: 0.5" ~ 24";
- Class: 150LB ~ 2500LB;
- OS&Y, Rising Stem, Bolted/Pressure Seal Bonnet, Flexible Wedge By Pass (On Request)
- Locking Device (On Request)
- Extended Bonnet for Cryogenic Service (On Request)
- Material: WCB/LCB/LCC/CF8M/CF8 etc..(On Request)



### Specifications

Design	ASME B16.34/API 600/BS1873
Face to Face	ASME B16.10
End Flange	ASME B16.5/B16.47
BW End	ASME B16.25
Test	API 598
Special	NACE MR-01-75





# Gate, Globe, Check Valve

## Check Valve

### Features

- Size: 0.5" ~ 36";
- Class: 150LB ~ 2500LB;
- Bolted/Pressure Seal Cover
- By Pass (On Request)
- Lever Weight(On Request)
- Material: WCB/LCB/LCC/CF8M/CF8 etc..(On Request)



### Specifications

- |              |  |
|--------------|--|
| Design       | ASME B16.34/API 600/BS 1868/API 6D/API 594 |
| Face to Face | ASME B16.10                                |
| End Flange   | ASME B16.5/B16.47                          |
| BW End       | ASME B16.25                                |
| Test         | API 598                                    |
| Special      | NACE MR-01-75                              |





*Your Success is Our Commitment*

[www.mkucorp.com](http://www.mkucorp.com)

**Office :**

Jl. Maple Timur 3 Blok CC 08,  
Summarecon Bekasi, Jawa Barat

Jl. Palem Raja No 12 Taman Beverly  
Lippo Cikarang, Bekasi, Jawa Barat

**Email :**

[Info@mkucorp.com](mailto:Info@mkucorp.com)

**Phone :**

021 - 29450182